

flexible LED **FL600**

flexible  **LED**

FOMEX®

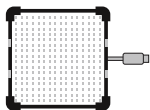
Contents

- In the box 2
- Accessories (Optional) 2
- How to connect 3
- How to install X-Mount 3
- How to use Controller 4
- How to install Softbox 4
- How to install Barn Door 5
- How to install Clamp Shoe 5
- Specification 6
- Notice 7
- Warranty 7

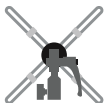
This product is a portable and flexible LED light.
Please read this operation instruction before using the product.
Stop using this product when abnormal operation is detected and contact the store or A/S center.

In the box

FL 600 Kit



LED Mat 1'x1' (30x30cm)



X-Mount Bracket



Controller



Kit Bag



Power Supply



Power Cord(5m)

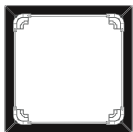


Extension Cable(5m)

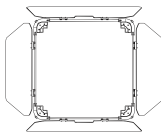


Clamp Shoe

Accessories (Optional)



Softbox with Quick Frame



Barn Door with Quick Frame



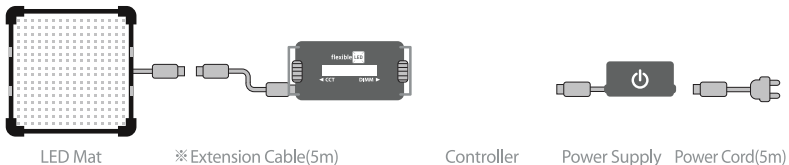
Boom Pole 3 Sections



Shoulder Strap

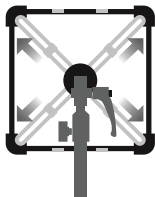
How to connect

Please connect to Power Supply in the following order.



※ Please use only the supplied extension cable from us when using the extension cable.

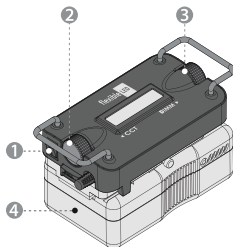
How to install X-Mount



- 1 Insert X-Mount in the rear corner of LED Mat Clips.
- 2 Install X-Mount in a stand or tripod after firmly fitted with LED Mat.

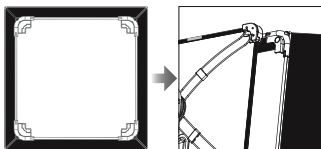


How to use Controller



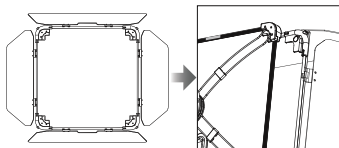
- 1 Turn on/off with ON/OFF switch on the left.
- 2 Adjust color temperature with the left CCT dial. The value from 3200k to 5600k will be displayed on the LCD display window.
- 3 Adjust brightness with the right DIM dial. The value from 0% to 100% will be displayed on the LCD display window.
- 4 Available to use battery pack with attached V-Mount instead of Power Supply.

How to install Softbox



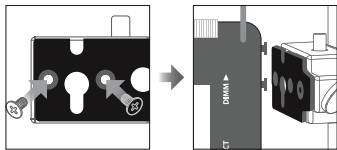
- 1 Assemble Quick Frame and put Softbox on it.
- 2 Face close to the corners of LED Mat to simply attach by magnets.

How to install Barn Door



- 1 Assemble Quick Frame and install Barn Door on it.
- 2 Face close to the corners of LED Mat to simply attach by magnets.

How to install Clamp Shoe



- 1 Tighten Clamp Shoe to a Clamp(Optional) with screws.
- 2 Mount Controller to Clamp Shoe.
(When using a light stand, use Controller after mounting to Clamp Shoe for please safety.)

Specification

Model	FL 600
Light Output	1900lux @1m; 3200K / 2000lux @1m; 5600K
Power Consumption	60W
CRI / TLCI	CRI 96~98 / TLCI 98
Color Temperature	3200K~5600K
Dimmer	0~100% DIM / Manual
Color Temp Control	50K Steps
Light Output Connector	6Pin Waterproof
IP Rating	IP64 except FLCR-Controller
DC Input	DC 13.8~24V (6Pin)
Beam Angle	120°
LEDs	576
Battery Mounts	V-Mount / Gold Mount
Dimensions (mm)	300 X 300
Weight	415g
Controller	Input : DC13.8 ~ 24V Display : Mono LCD CCT : 3200K ~ 5600K DIM : 0 ~ 100% Dimension : 204mmX99.8mmX55.5mm Weight : 577g
Power Supply	Input : AC100 ~ 240V 50/60Hz Output : DC 15V, 4A, 60W

Notice

1. Must use supplied Power Supply only. Otherwise, it may cause a problem.
2. Do not use in rain or in a humid place.
3. Do not close to flammable objects.
4. Operating temperature range is 0°C ~ 40°C.
5. Handle with care when you use for a long time because the heat may occur.
6. Handle the cable attached to LED Mat with caution.
7. Do not fold LED Mat or bend it more than 60 internal degrees.
8. Keep LED Mat completely flat after disconnecting Power Supply and Controller.
9. Keep away from children.
10. Do not handle with a wet hand.
11. Do not drop or shock on the product.
12. Turn off the power after use and keep in provided Kit Bag after cooling enough.
13. Cannot receive A/S warranty with self-repair, and we're not responsible for product damage.

Warranty

Warranty provisions for this product are listed below:

1. Guarantee this product for ONE Year against defects in product and components (except consumable spare parts). The purchase date is considered as the date registered on the warranty card when buying the product.
2. During the warranty period, repair the defects using new or renovated parts without any charge, or exchange the defective product with a new product or a product which has been manufactured by new or refurbished components and is functionally equivalent to the normal product.
3. Apply only to the original product that can be identified by the trademark, trade name, or logo affixed to the product.

Inapplicable Warranty

- 1.Expired warranty period.
- 2.Breakage or damage caused by inappropriate usage, repair, maintenance and accident.
 - 1) Installation and removal with improper external equipment or improper usage.
 - 2) Fall and external shock.
 - 3) Exposure to the extreme environment of abnormal temperature, a solvent, an acid, a base, a flood and a humid.
 - 4) External damage such as scratch, dent and breakage.
- 3. Disrepair and damage caused by installation, repair, improvement, addition, disassembly by unauthorized institution or person.
- 4. Modified, replaced, removed information identifying the original product.
- 5. Absence of the valid warranty card.
- 6. Disrepair and damage caused by usage of illegal nonstandard and unofficial software.

Please keep this warranty card after writing information at the purchase as it is necessary for applying for services.

Customer Information	Name	
	Contact Number	
	Address	
Seller Information	Name	
	Contact Number	
	Address	
	Date of Sale	
Product Information	Name	
Note		



www.fomex.com

Unit701, 31-18Gil, Seongsui-ro, Seongdong-gu, Seoul 04787 Korea

Tel +82 2 545 0004 Fax : +82 2 3444 9399 E-mail : info@fomex.com